

How to Download the BAT Ver.2.1

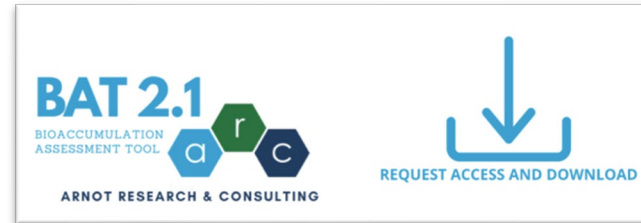
including

How to enable macros and ActiveX controls

February 3, 2026

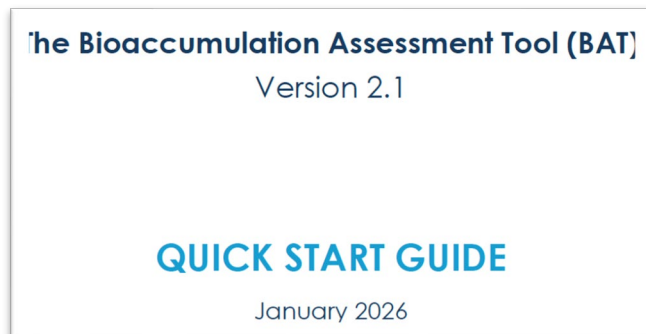
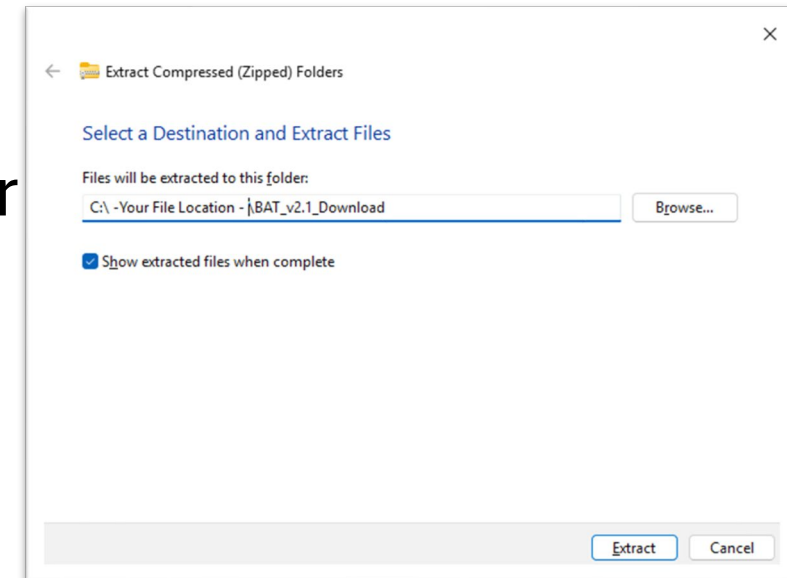
We have developed the BAT code only for carrying out the model calculations and functionality within the workbook and it can be trusted. To make the BAT useable follow these basic steps:

1. Register and download

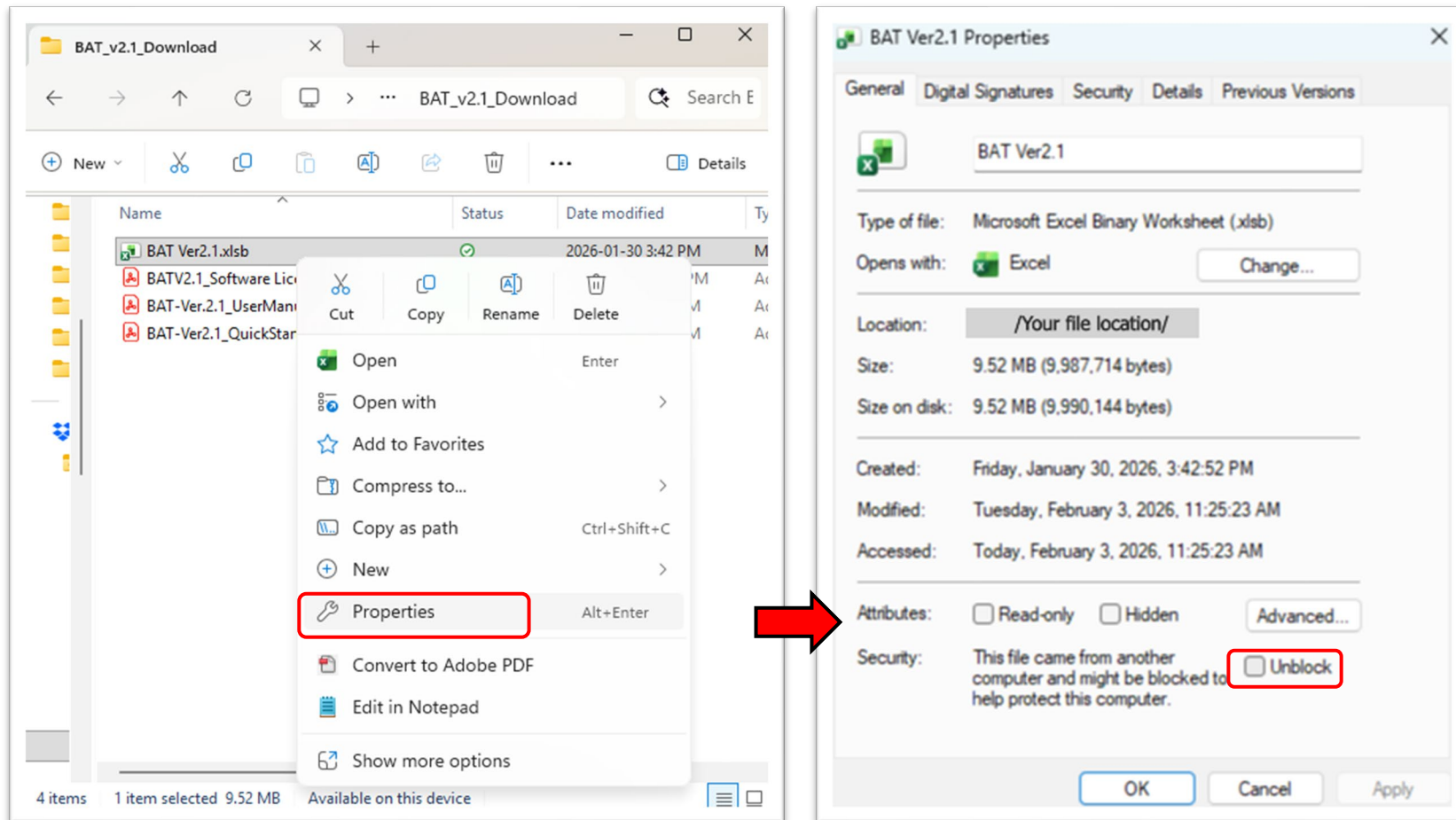


2. Unzip and copy the files into a different folder

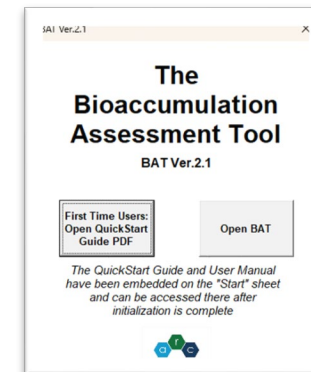
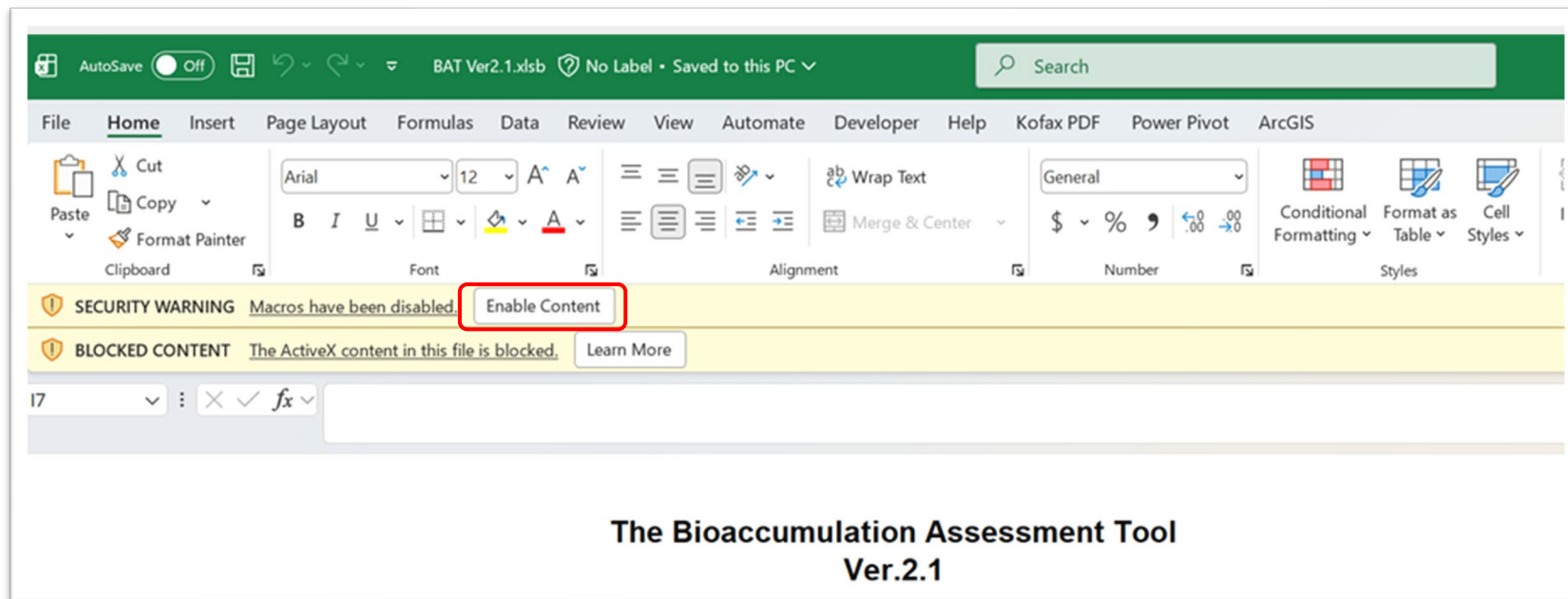
3. Read the Quick Start guide



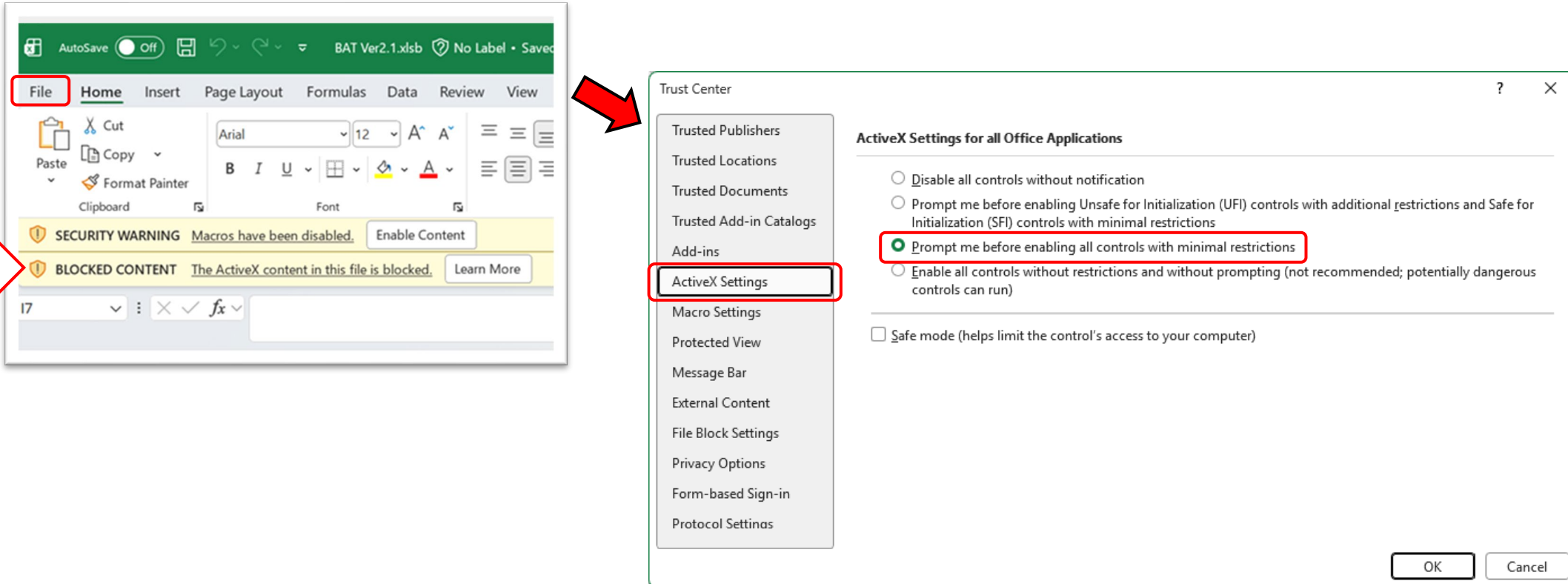
4. In the new folder, right click on the BATver.2.1.xlsb file and select Properties. Check the Unblock checkbox. Click OK. If there is no “Unblock” option, close the properties window and continue.



5. Open the BATver.2.1.xlsx file. The Start Page will open. Depending on your security settings it may be necessary to Enable Content for the VBA code and BAT to work. Press “Enable Content”. After pressing “Enable Content” it may take a few seconds for the BAT to load. Please be patient and do not touch any buttons until the initialization form loads.



6. Please note, some users may need to make changes to their Microsoft Office 365 and Office Application settings in the Trust Center by navigating **File > Options > Trust Center > Trust Center Settings > ActiveX Settings > “Prompt me before enabling all controls with minimal restrictions”**



The image shows a screenshot of Microsoft Excel with a security warning and the Trust Center settings dialog box. A red arrow points from the 'File' menu in the Excel ribbon to the Trust Center dialog box. Another red arrow points from the text 'If you see this' to the security warning in Excel. The Trust Center dialog box is open to the 'ActiveX Settings' section, where the option 'Prompt me before enabling all controls with minimal restrictions' is selected and highlighted with a red box. The 'Safe mode' checkbox is also visible at the bottom of the dialog box.

If you see this

Trust Center

- Trusted Publishers
- Trusted Locations
- Trusted Documents
- Trusted Add-in Catalogs
- Add-ins
- ActiveX Settings**
- Macro Settings
- Protected View
- Message Bar
- External Content
- File Block Settings
- Privacy Options
- Form-based Sign-in
- Protocol Settings

ActiveX Settings for all Office Applications

- Disable all controls without notification
- Prompt me before enabling Unsafe for Initialization (UFI) controls with additional restrictions and Safe for Initialization (SFI) controls with minimal restrictions
- Prompt me before enabling all controls with minimal restrictions
- Enable all controls without restrictions and without prompting (not recommended; potentially dangerous controls can run)

Safe mode (helps limit the control's access to your computer)

OK Cancel

Now the BAT Ver.2.1 should be operational on your computer.

If you require further assistance or would like to provide feedback, please contact us at: <https://arnotresearch.com/bat/> and click this button

We would like your feedback if you have used the BAT. Please provide it by clicking here.